

MANSAVER MOUNTING INSTRUCTIONS

-IT IS RECOMMENDED THAT THE MANSAVER (SAFETY BAR) BE MOUNTED TO THE TRUCK BODY OPPOSED TO THE CAB BODY.

-THE MANSAVER BAR CAN BE MOUNTED ON THE LEFT OR RIGHT SIDE OF THE VEHICLE. IT SHOULD MOVE UP AND IN.

STEP 1: USING THE TEMPLATE PROVIDED, DRILL (4) 3/8" DIA. HOLES IN THE BODY OF THE TRUCK AT THE APPROPRIATE HEIGHT.

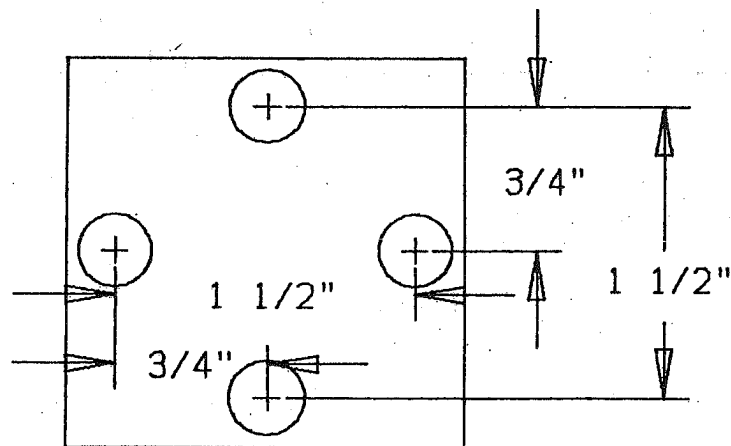
STEP 2: MOUNT THE MANSAVER WITH THE HARDWARE PROVIDED (5/16-18 UNBRAKO CAP SCREWS). MAKE SURE THE CAP SCREWS ARE AT A MINIMUM DEPTH OF 5/8" INTO THE MOUNTING BLOCK PORTION OF THE MANSAVER. IF NEEDED USE 5/16" HEX NUTS TO ADJUST CAP SCREWS TO A PROPER FIT. (SEE DRAWING ON THE OTHER SIDE)

IMPORTANT NOTES:

-THE MOUNTING AREA SHOULD BE STRONG ENOUGH TO ABSORB THE LOADS THAT THE MANSAVER WILL IMPOSE UPON IT (THE FORCE OF A FIREFIGHTER BEING THROWN AGAINST THE BAR). IF IT IS NOT STRONG ENOUGH THE BAR MAY TEAR OFF OF THE VEHICLE AND CAUSE SEVERE INJURY OR DEATH.

-IF THE MOUNTING AREA IS TOO THIN, THEN A LARGE (1/4" THICK MINIMUM) REINFORCING PLATE SHOULD BE USED TO BRACE THE MOUNTING AREA.

-YOU MUST USE GRADE 8 OR BETTER MOUNTING HARDWARE.



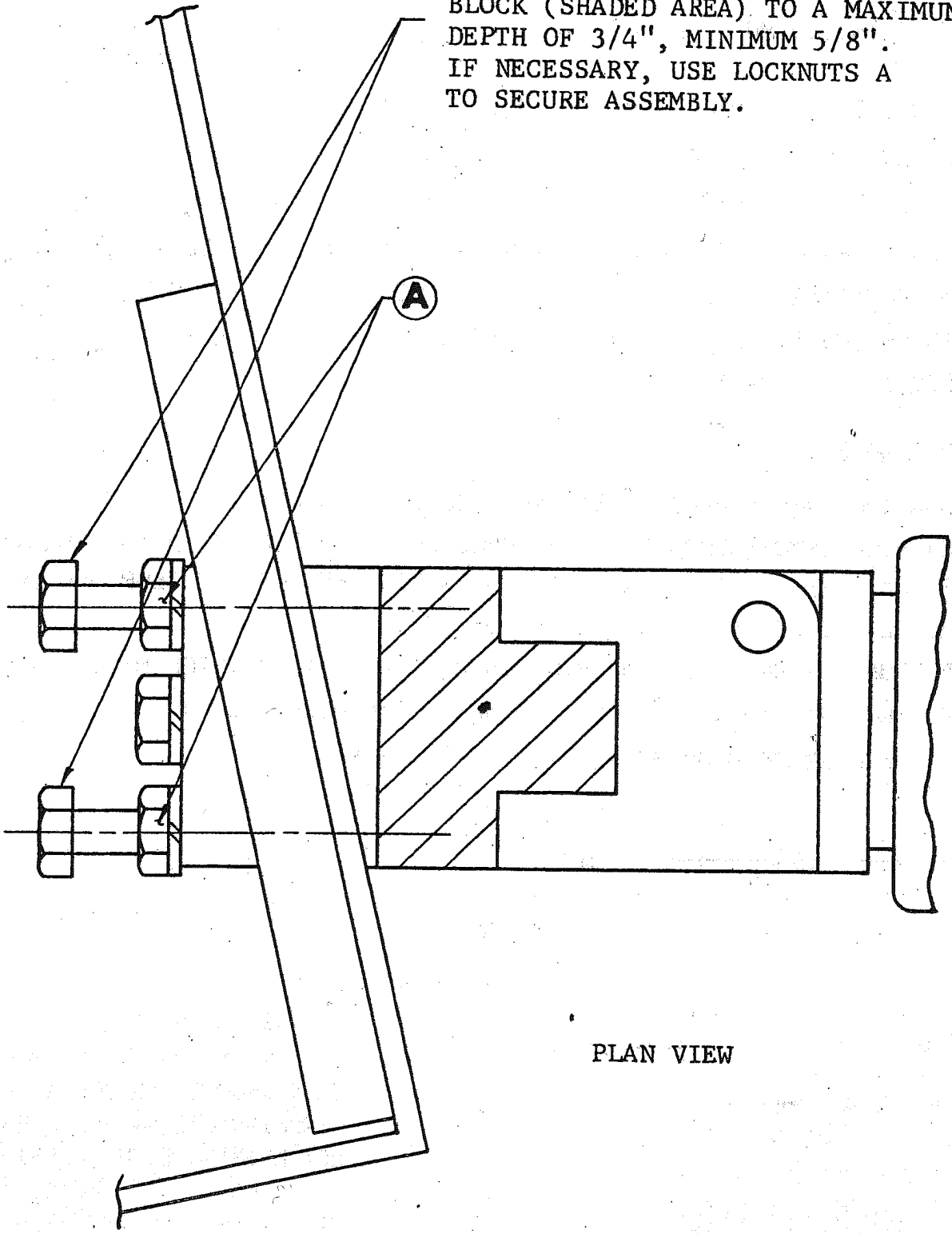
MOUNTING
TEMPLATE

W A R N I N G

* * * * *

THIS PRODUCT IS DESIGNED TO HELP FIREFIGHTERS ON VEHICLES. IT WILL NOT ELIMINATE THE POSSIBILITY OF INJURIES IN ACCIDENTS. THE BEST WAY TO PREVENT INJURIES IS TO HAVE ALL FIREFIGHTERS SEATED WITH A SEAT BELT ON.

ADJUST BOLTS TO ENGAGE MOUNTING
BLOCK (SHADED AREA) TO A MAXIMUM
DEPTH OF 3/4", MINIMUM 5/8".
IF NECESSARY, USE LOCKNUTS A
TO SECURE ASSEMBLY.



PLAN VIEW

MOUNTING SCHEMATIC